

# So Cal Rush G01

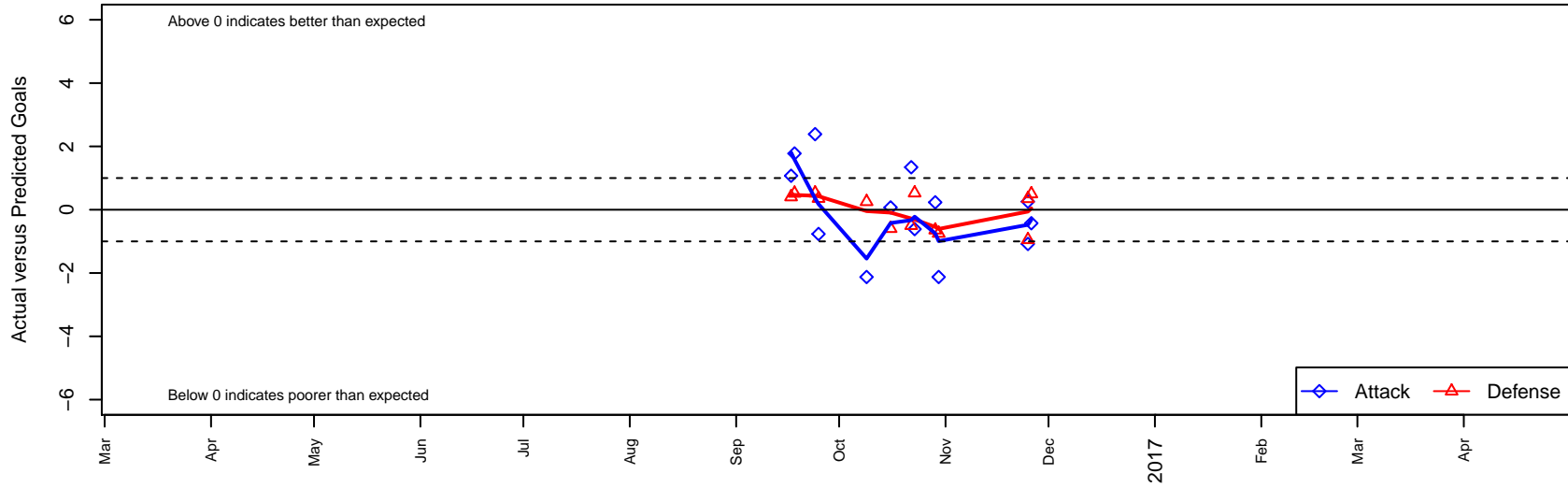
alt names used:

Venues played:

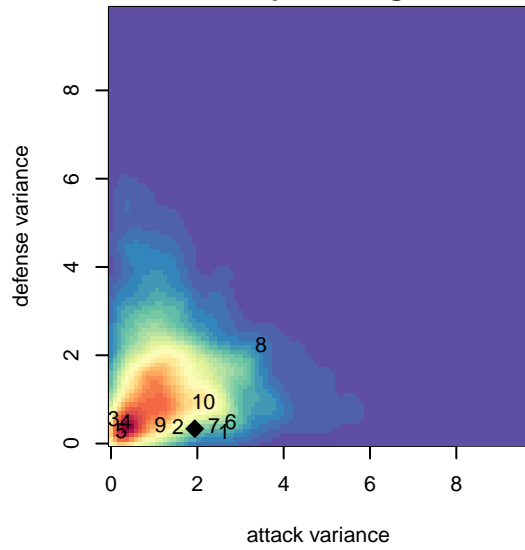
, CAS  
G01 total strength=1887  
attack=39.56 defense=47.16  
fall league = SCDL FI1 U16

2016 SCDL FI1 U16  
2016 Nomads Thanksgiving 1st Division U16

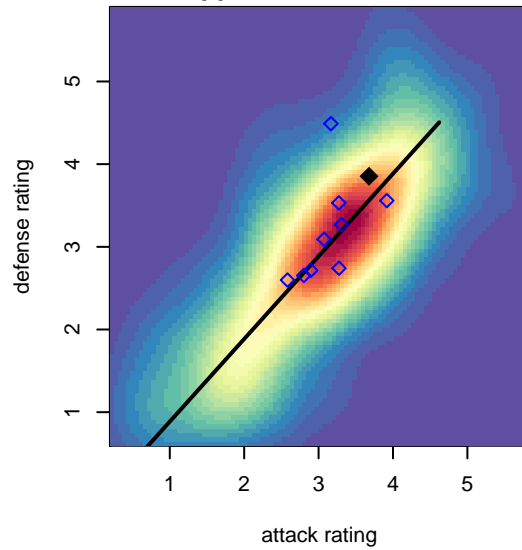
**So Cal Rush G01**  
Dots are actual minus expected GF (blue circles) and GA (red triangles).  
Blue line is smoothed change in attack strength. Red is smoothed change in defense strength.



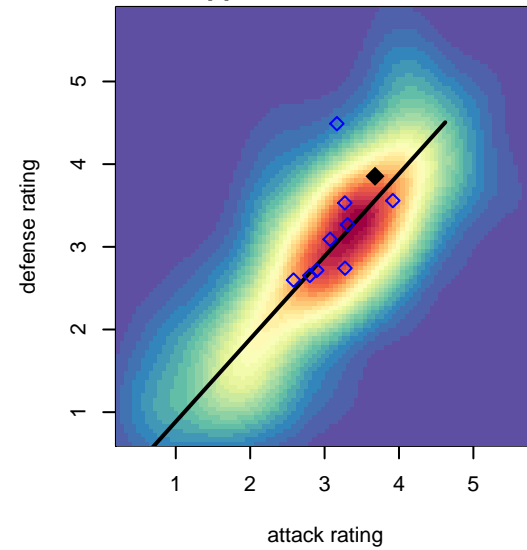
**attack and defense variance (black dot)  
relative to other teams  
and top 10 in region**



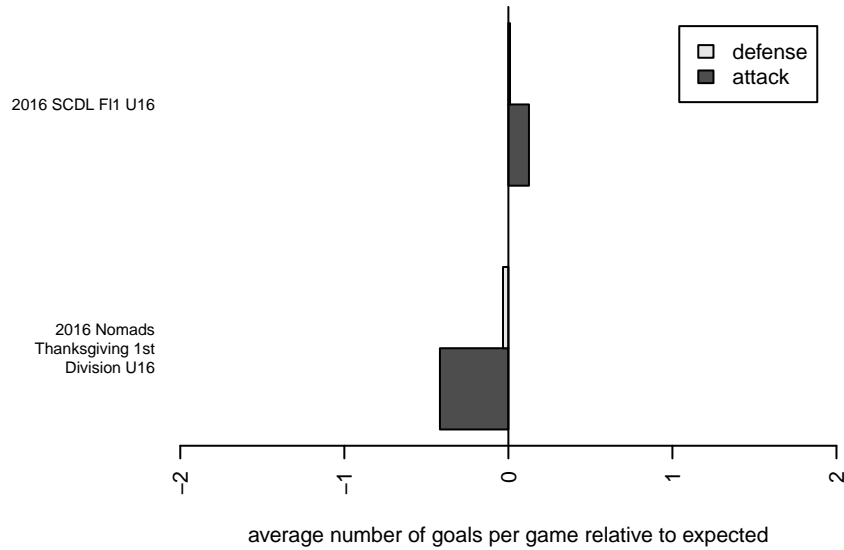
**attack and defense rating  
relative to others at age  
and all opponents in last 13 months**



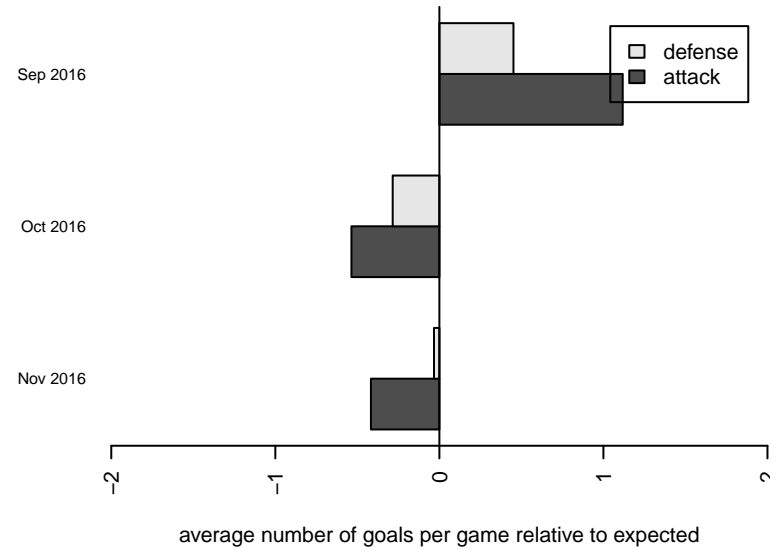
**attack and defense rating  
relative to others at age  
and all opponents in last 13 months**



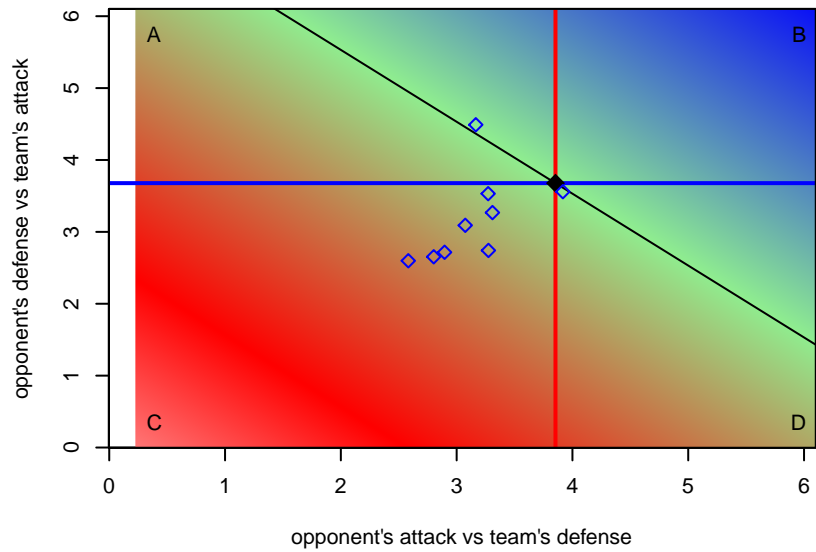
**Performance relative to 13 month average**



**Performance relative to 13 month average**



Distribution of opponents  
 Red = Lose zone, Blue = Win zone, Green = Even  
 Black line separates win/lose zones



lot. A=Neither has attack advantage, B=Opponent has both attack and defense advantage, C=Opponent has both attack and defense disadvantage, D=Both have

|     | home                                 |   | away                                 |   | venue                                    | pred.home | pred |
|-----|--------------------------------------|---|--------------------------------------|---|--|-----------|------|
| -26 | Utah Storm G01                       | 0 | So Cal Rush G01                      | 0 | 2016 Nomads Thanksgiving 1st Division U1 | 0.50      | 0    |
| -25 | So Cal Rush G01                      | 3 | LA Premier FC Black G01              | 0 | 2016 Nomads Thanksgiving 1st Division U1 | 2.74      | 0    |
| -25 | South Valley SC G01                  | 2 | So Cal Rush G01                      | 0 | 2016 Nomads Thanksgiving 1st Division U1 | 1.05      | 1    |
| -30 | CDA Slammers FC Yorba Linda EGSL G01 | 1 | So Cal Rush G01                      | 1 | 2016 SCDL F11 U16                        | 0.25      | 3    |
| -29 | So Cal Rush G01                      | 3 | Arsenal FC South G01                 | 1 | 2016 SCDL F11 U16                        | 2.77      | 0    |
| -23 | Arsenal FC EGSL G01                  | 0 | So Cal Rush G01                      | 1 | 2016 SCDL F11 U16                        | 0.53      | 1    |
| -22 | So Cal Rush G01                      | 4 | Murrieta Surf White G01              | 1 | 2016 SCDL F11 U16                        | 2.66      | 0    |
| -16 | So Cal Rush G01                      | 2 | Legends FC Gold G01                  | 1 | 2016 SCDL F11 U16                        | 1.93      | 0    |
| -09 | So Cal Rush G01                      | 1 | CDA Slammers FC Yorba Linda EGSL G01 | 0 | 2016 SCDL F11 U16                        | 3.13      | 0    |
| -25 | Arsenal FC South G01                 | 0 | So Cal Rush G01                      | 2 | 2016 SCDL F11 U16                        | 0.36      | 2    |
| -24 | So Cal Rush G01                      | 4 | Arsenal FC EGSL G01                  | 0 | 2016 SCDL F11 U16                        | 1.61      | 0    |
| -18 | Legends FC East Riverside G01        | 0 | So Cal Rush G01                      | 3 | 2016 SCDL F11 U16                        | 0.52      | 1    |
| -17 | Legends FC Gold G01                  | 0 | So Cal Rush G01                      | 3 | 2016 SCDL F11 U16                        | 0.40      | 1    |